



## Some 'New' Derbyshire Insects

by Bill Grange

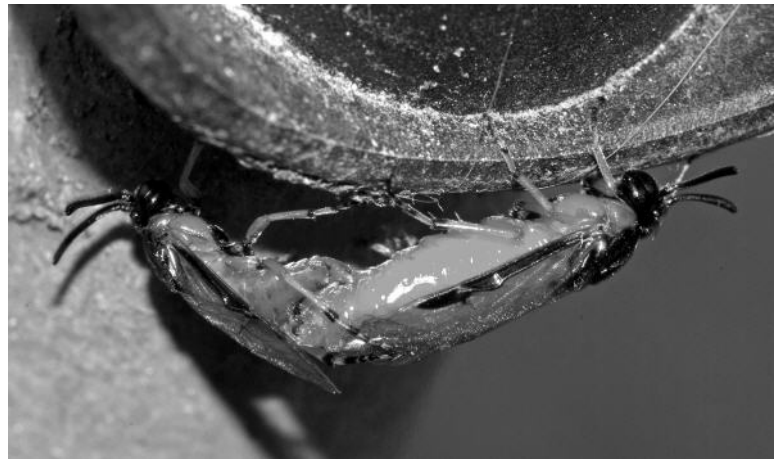
For the past four years, a fellow natural history photographer enthusiast, Steve Plant, and I have been on many expeditions out into Derbyshire and neighbouring counties in pursuit of suitable subjects, especially insects. We have given particular attention to that wonderful Park - on the northern fringe of Derby - as part of a wildlife recording project of the Friends of Allestree Park.

2010 proved to be a particularly fruitful year in that we discovered and photographed at least three insect species which hadn't been recorded in Derbyshire before, one of these from Allestree Park itself. These come on top of the discovery of a continental map butterfly in Brian and Margaret Hobby's garden, described elsewhere in this issue of Observations. All three records were sent to specialists in the various groups, including those in Derbys. and Notts. Entomological Society, for their comments. It just goes to show that in a vast group of animals such as insects which have comparatively few people (alas) studying them, there are many new discoveries to be made, even among our local fauna.



***Leptura fulva* (syn. *Paracorymbia fulva*) - The Tawny Longhorn Beetle, Stanton Lagoon Nature Reserve near Ilkeston, July 2010 by Steve Plant**

This species has brownish-orange wing cases and black thorax, head, legs and antennae, between 9 and 14mm, combined body and head length. Like most longhorn beetles, the larvae feed on decaying wood, the adults on nectar and pollen (here it is on wild carrot). It was photographed a week after the DNHS visit to the site. This beetle is widely distributed in continental Europe and in southern England. Its presence in Derbyshire may just be due to the same probable reasons for the appearance of the Hobby's map butterfly - whose garden is not too far from Stanton Lagoon - or, as in the case of other species, a move north in response to climate change.



***Athysanus argentarius* - A Leaf-hopper**  
Woodlands Field, Allestree Park,  
August 2010 by Bill Grange

Leaf hoppers look like miniature cicadas and indeed are closely related to them - and to froghoppers, with which they share the capacity for jumping. Like these they are members of the 'true bugs', the Hemiptera and are in the sub-order Homoptera.

They hatch from the egg as wingless miniatures of the parents, with no pupal stage. They feed, using a hollow 'tongue' evolved from the basic biting mouthparts.

*Athysanus argentarius* is straw-coloured with darker brown markings and grows to 6.5 to 8mm.

Historically considered scarce and confined to coastal areas in the south-east, the species has now become established in inland sites in parts of central and southern England and can be found in a variety of grassland habitats. This now includes our own County. It is probably quite abundant - so look out for it!

***Arge ochropus*- A Saw-fly**  
Garden of photographer, Birchover Way,  
Allestree, Derby, August 2010  
Single specimen and mating pair  
by Steve Plant

Sawflies are members of the same group which include ants, bees and wasps, the Hymenoptera. Marion Bryce provides more information about them in her article on page 13.

*Arge ochropus* has a brilliantly orange thorax, abdomen and legs with a black head and antennae. It reaches a length of 7 - 10mm.

It is widely distributed in south-east England and until this year the northernmost records were in Leicestershire. As it is one of several species which feed as larvae on rose bushes, its move north into Derbyshire will not be welcomed by some gardeners!